

Cibolo Creek FFA

2021-2022 Goat/Lamb Book

ADVISORS

April Zunker-primary goat contact
(210)-748-4711
azunker@scuc.txed.net

Kori Heath-primary lamb contact
(210)-945-6574 or (512)-992-6505
kheath@scuc.txed.net

PURPOSE

The purpose of a production livestock feeding program is to allow students to develop responsibility, leadership skills, and gain hands-on knowledge and application of the livestock industry. Prior knowledge of animal or stock showing is not needed. Agriculture Science Teachers (ASTs) will assist with the project and guide you through out. There will be meetings and information given throughout the year.

HANDBOOKS AND FFA INFORMATION:

Agriculture Science Policy Handbook

The handbook, which is on our website, contains all rules, policies, and procedures for our FFA chapter. Please read it, know it, and follow it

Toby Connor Complex Agreement

The Toby Connor Complex Agreement needs to be signed by all students, not just students that raise their animal at the schools facility. Only animals shown in the market show are eligible to be raised in the goat/lamb barn. The Complex Handbook and Usage Agreement form can be found on our website. **It must be signed with SAE fees paid prior to animals moving in.**

Home Project Agreement:

You do have the option to raise your project at home. Please be aware of zoning regulations. The Agriculture Science Teacher (AST) will make home visits to help you with your project as needed. If you are needing to use the Toby Connor Complex for washing, clipping, treadmill etc. there will be a reduced SAE fee to pay \$25.00. If you do not need to use any supplies then there is no SAE fee for raising at home.

FORMS:

- o Member information forms need to be filled out
- o Medical Release and Information must be filled out.
- o Transportation Consent form must be filled out.
- o Toby Connor Agriculture Complex Handbook Agreement and/or Home Project agreement must be signed
- o SCUC ISD Agriculture Science Policy Handbook Receipt

STOCK SHOWS:

Stock show sign up night is in **November during the FFA meeting**. You must attend with a parent/guardian and pay for all entries at that time. ASTs will assist you with your entries.

County show is the 3rd week of January.

Animals that make the sale are not physically sold; in essence the exhibitor is selling his or her ribbon. There is no guarantee at the county sale on the amount of money you will make.

Sometimes a 14th place animal brings more than a class winner. You are strongly encouraged to make contacts and bring financial support for child's project. Upon conclusion of the show you may sell your goat/lamb for market price. You may decide to have your goat/lamb processed, or if neither of these options sounds good to you then you may be able to give it away to someone. If you are planning on attending San Antonio Stock show you will use the same animal.

However, **all projects must be removed from the facilities within 7 days after your last show!**

San Antonio Stock Show is in the middle of February. 6% - 7% of market goats/lambs make the sale and it is a terminal show. One lamb/goat is allowed per exhibitor.

There are other major shows that you may want to attend if you have multiple animals. You are welcome to show at these shows but due to budget restrictions/district policy, we will not attend unless there are 5 or more students exhibiting each species participating at that show.

We will be attending two prospect shows in the fall that will be announced at a later date.

ESTIMATED PROJECT EXPENSES

The following gives an **estimated** breakdown of what a goat/lamb project can cost, figured through the Guadalupe County Junior Livestock Show. Please note that this is just an estimate to give you an idea of the amount of money that will be invested in your project. Your actual expenses could be more or less. **You should understand that it is possible to lose money on a project.**

Purchase animal (Varies)	\$ 600.00 +
Cost of Feeding (9 - 10 months)	
Early Stages (3-4 months)	\$ 40.00
Middle Stages (1-2 months)	\$ 55.00
Late Stages (3-4 months)	\$ 55.00
Finishing Stages	
Adding other feed products (Additives)	\$ 40.00
Alfalfa Hay Cost (\$15.00/bale/lamb)	\$ 15.00
Stock Show Additives	\$ 45.00
SAE Fee	\$ 100.00
Validation	\$ 20.00
FFA Dues	\$ 25.00
Cost of Shows	
Prospect Shows (\$20-\$30 / show)	\$ 60.00
Cibolo Creek FFA Chapter Show	\$ 10.00
Guadalupe County Junior Livestock Show	\$ 20.00
Cost of Supplies (Equipment)	
Chain/Rope Halter	\$ 4.00
Blanket	\$ 25.00
Sock	\$ 17.00
Shampoo	\$ 10.00
Brush	\$ 10.00
Towels (For Stockshow)	\$ 10.00
Mesh Muzzles (For Stockshow)	\$ 9.50
Shavings (For Stockshow)	\$ 12.00
Rubber Boots (Optional)	\$ 17.00
Feed Bucket – 10” Clip-on feeders	\$ 14.00
Water Bucket – 5 gallon	\$ 3.00
Miscellaneous	\$ 50.00 +
	<hr/>
	\$ 1, 266.50

NOTE: If you are planning on showing in any major stock shows, additional funds for feed and entries will be needed.

All entry fees for Guadalupe County Show and Majors will be due at the November FFA meeting.

ANIMAL COST

Your animal's cost most of the time is related to your overall goal. Do you want to make the sale, win a class, win a breed or win the whole show or maybe just gain experience?

Generally, the higher a goal you set, the more expensive a project you will start with. **Keep in mind this is just a rule of thumb!** Animals that are \$1000s of dollars sometimes do not make the sale and cheaper animals can win the whole thing. It is dependent on **many factors!** However, you should understand that many times animal projects can result in a total loss and you should not expect to make a large profit.

LAMBS:

At the Guadalupe County, San Antonio, Austin, and Houston Livestock Shows lambs will be divided into the following classes:

- **Southdown** – usually the least popular lamb breeds at show, but has grown in recent years. Normally the smallest classes.
- **Finewool** – one of the more costly lamb classes to show. Popularity declining due to cost.
- **Finewool Cross** – mixture of Finewool and Medium Wool breeds. Tries to combine the best of both traits. Second most popular class.
- **Medium Wool** – These are usually Suffolk and Hampshire breeds. Most popular class and the largest at livestock shows. Sometimes called the black faced breed.

GOATS:

At the Guadalupe County, San Antonio, Austin, and Houston Livestock Shows goats will be divided into classes according to the animal's **weight not breed**. Each class will have a specific weight range and depending on the animals weight they will be placed into the appropriate class. Cibolo Creek FFA show only boer goats.

ANIMAL PURCHASING

The cost for a goat/lamb project will vary according to breeder and which show(s) you want to compete in. AST will determine the number of animals a student may have depending on barn space and student experience.

There are two ways in which a goat/lamb project can be bought.

- 1) You can purchase your own project. You need to get approval from your AST first though. The ASTs will want to make sure the animal you bring in comes from a producer that has done all of the appropriate health requirements as not only does that put your animal at risk but also every other project.
- 2) The AST can help purchase your goat/lamb. If you don't feel comfortable that you know where to find quality goats/lambs or what a quality goats/lambs looks like, the AST can help get them. It required that students/parents to go with the advisor to select and purchase animals to not only gain experience, but to also have a hands-on part in a large part of your project.

Remember that even is an AST assist you in buying your animal or you buy on your own do, there is no guarantee of money with any livestock.

SUPPLIES: Before animals are purchased and moved into the barn, exhibitors must have all needed supplies

- ❑ Halter- you can get a rope halter or a buckle halter. We use these to walk you lamb/goat.



Buckle Halter

Rope Halter

Goat collar with Chain

- ❑ Bucket- you need a 5 gallon water bucket. It needs to have a handle so you can clip it to the fence. You also need a "C" clip if the bucket does not come with one.
- ❑ Manure Bucket- a regular bucket for manure. You can purchase the "lowes bucket"
- ❑ Feeder- You need to purchase a fence feeder that comes with 2 "C" clips. This is what you will feed your animal with
- ❑ Feed- you need one bag of feed. The brand of feed is your choice. Whatever brand you feed you want it to have 18% protein. Purchase one bag of feed at a time.
- ❑ Metal Trash can (2)- You will need two small (4 Gallon) metal trash cans to store your feed and supplies. This prevents rats from getting in your feed and supplies. You can get them from Home Depot (Ash Cans)
- ❑ Hay- Buy some Alfalfa hay. Your lamb/ goat needs a handful of hay a day.
- ❑ Hay Storage Bag- You need to buy a hay storage bag to keep you hay in. You might have to buy it online or order it through a feed store. Or you can purchase an extra metal trash can to store your hay. .
- ❑ Muzzle- Your lamb/goat will wear this at show and when he travels to keep him from eating grass and shavings.

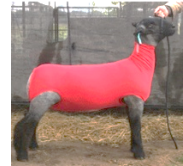


SOME OTHER SUPPLIES INCLUDE:

- ❑ Feed scoop (something to measure out about 1 lb. of feed)
- ❑ Kitchen Scale to weigh out feed
- ❑ Lock for locker (must be combination lock and you need to give the combo to your AST)
- ❑ Drench gun



- ❑ Blanket and/or slinky
- ❑ Ivory soap *
- ❑ EZ Clean or waterless shampoo *
- ❑ Towel *
- ❑ Brush *



The * denotes equipment that will be used at shows.

Heat lamps are not permitted in the goat and lamb barn. Slinkys and Goat/lamb Blankets will be used.

GOAT/LAMB FEEDING

All goats and lambs must be fed twice a day on a regular schedule approximately 12 hours apart, once in the morning and once in the evening (yes, this includes weekends and holidays!). Fresh feed must be provided at each feeding. It is the responsibility of each exhibitor to secure transportation to and from the Toby Connor Agriculture Complex. Exhibitors must take care of their animals before and after school. It is understood that some exhibitors will have other commitments after school and will have to take care of their animals later. This should be done before 9:00pm. ASTs will help direct the exhibitors on how much to feed (usually start out with 3% of the body weight).

Example: Animal weight is 50lbs

$50 \times .03 = 1.5$ Lbs

1.5/2 Feedings a day = .75 lbs a feeding AM & PM

Some feeds that have been used in the past are Purina Honor Show Chow and Jacoby's Red Tag or Pink Tag for goats and Jacoby's Red Tag or High Noon for Lambs (Lambs cannot have goat feed or any feed that contains copper. Copper is lethal to lambs). Feed stores, your advisor as well as your breeder can help you decide the best feed for your goals. Feed change and suggestions will be addressed once your animal has been evaluated by the Advisors and after prospect shows.

No matter what brand of feed you decided to use, make sure that it is a high quality feed that is designed specifically for show animals and that you get it approved by your advisor.

GENERAL HEALTH GUIDELINES:

Ringworm: It's a fungus not a worm. Use antifungal ointment.

Coccidiosis: Inflation of the large intestine causes diarrhea. Advisor will instruct you on using Corid.

Intestinal Worms: alternate dewormer every 21 days per instruction of Agriculture teacher.

Pink eye: It's an infection in one eye. Use Vetericyn Pink eye.

BARN CLEANUP & MAINTENANCE

- Each goat/lamb feeder will need to clean and rake his or her sand level every day.
- Concert will be scraped and swept. You will spray the concrete for urine after all manure has been swept into the manure bucket.
- **All manure should be removed and placed in the manure pile.** Manure is not allowed to be swept in the gutters or left in a pile. Manure will be placed in a bucket and the bucket will be dumped in the manure dumpster after every cleaning. Buckets left with manure in it will not be tolerated.
- All tools should be put back in their correct places hanging on the wall when students are done with them. If a tool breaks notify your advisor in writing so we can replace it.

- Water buckets and feeders must be cleaned every feeding; animals will not eat or drink out of dirty feeders and water buckets. After every feeding remove the animal's feed pan from the pen.
- Every day, check animals for scours (loose feces), proper urination, and snotty nose. Report **ANY** change of eating habits immediately to the AST. Also report any signs of fungus immediately (patching red spots/scabs).
- After the Animals last show the student has 7 days to clean the pen (rake sand, Spray concrete) and remove all belongings from barn and lockers.

Individual Pen Assignments will be assigned at a later date.

All feeders will be required to perform additional cleanup and duties outside of their pens as needed, including barn cleanups and trash removal.

Important Numbers:

D & D FARM & RANCH SUPPLY
516 IH 10 E
SEGUIN, TX 78155
830-379-7340
D&D Farm and Ranch

ST. HEDWIG FEED & SUPPLY
540 E. FM 1518 SOUTH
ST. HEDWIG, TX 78152
St. Hedwig Feed Website

PRODUCER'S COOP - NEW BRAUNFELS
210 S. CASTELL ST.
NEW BRAUNFELS, TX 78130
830-606-1231

CIBOLO VALLEY ANIMAL HOSPITAL
3519 Haeckerville Rd
Cibolo, TX 78108
210-659-0000

CROSSROADS VETERINARY CLINIC
1450 E. Kingsbury St.
Seguin, TX 78155
830-372-4521

PARKVIEW VETERINARY CLINIC
3058 Sutherland Springs Rd
Seguin, TX 78155
830-379-2170

CONOVER VETERINARY HOSPITAL
918 S. Hwy 123 Bypass
Seguin, TX 78155
830-401-4714

DEASON ANIMAL HOSPITAL
1712 D. St.
Floresville, TX 78114
830-393-4567

MARION ANIMAL HOSPITAL
128 West Seguin
Marion, TX 78124
830-914-4900

PEN ASSIGNMENTS

- Only animals shown in the market show are eligible to be raised at the Toby Connor Agriculture Complex goat/lamb barn.
- All animals will be entered and shown at Guadalupe County Youth Show.
- Pen assignments will be determined by the AST based on the student's prior ag complex usage, attendance at all clinics, meetings, and availability of pens.
- Altering pen will not be permitted.
- Pen reassignment may occur at the AST's discretion.
- Goats and Lambs will be penned separately on their perspective side.
- If there are two animals per pen there will be an empty quarantine pen.
- If two different owners have to partner up for pen space then all owners will be partnered up if they have only one animal.
- The pens will be limited to two animals per pen.

LOCKERS

- Lockers are assigned by the AST.
- Lockers must be cleaned and free of hay/ open feed.
- Hay and Feed must be stored in a metal container/ hay bag.
- SCUCISD and its employees are not responsible for theft or damage of any personal items at the Toby Connor Agriculture Complex.
- All locks **MUST** be **COMBINATION** (no key locks) and the AST needs the combination.

WEIGHING

Goats/Lambs will need to be weighed once a week. It's the responsibility of each feeder to record the weights of their animal(s) and to notify the AST of their animal's weight each week.

SHEARING

Goats/Lambs will need to be sheared on an as needed basis, before prospect shows, and stock shows. ASTs will gladly assist any goat/lamb exhibitor that needs help at the scheduled shearing times only. EACH GOAT/LAMB FEEDER IS RESPONSIBLE FOR CLIPPING HIS OR HER OWN ANIMAL.

EXERCISE

Goat/Lamb projects should be walked daily and should be halter broken as soon as they are adjusted to you and the Toby Connor Agriculture Complex. Once your goat/lamb has been halter broken, you will need to work on showmanship daily. That means practice on driving and setting up the goat/lamb for show every day. We also have a treadmill that may be used, but only after significant weight is put on the animal.

FEEDER MEETINGS/CLINICS

Goat/Lamb meetings will be held once a month at the Toby Connor Agriculture Complex. You will be notified in advance of meeting dates and times. Every goat/lamb feeder needs to attend these meetings each month this includes homeraisers. At these meetings, ASTs will give out important information that is needed to the feeders. Also, goat/lamb feeders need to check the white board daily to ensure that they don't miss any information left by the AST. This includes goat/lamb meeting dates and time changes. It is the responsibility of each feeder to notify the agriculture teacher if he/she will not make the feeder meeting. Goat/Lamb Showmanship

Clinics will be offered throughout the year. You will be notified in advance of the clinic dates and times.

*****Watch for updates about our next meeting in the fall, which will have more information about validation and show dates/deadlines.**

STUDENT EXPECTATIONS:

- Feed and water twice a day
- Clean out feed bucket twice a day and water bucket once a day. Add fresh feed/water at each feeding.
- DO NOT keep water buckets in direct sunlight. They will grow algae.
- Clean out pens every day. Concrete and Sand.
- Check for scours and runny noses on lambs/goats daily. Report any abnormalities.
- Don't leave animal unattended while they are tied up for any reason.
- Any unnecessary articles are not allowed on animals.
- Only wash your lambs before they are sheared.
- Weigh weekly and record on proper sheet.
- Worm once a month.
- Exercise (walk/run) your animal daily. Increase the workout routine once they build up endurance.
- Work with your animal daily. Practice setting and showing your animal.
- Attendance of ALL mandatory barn clean ups and meetings from start to finish.
- Being aware of your grades to prevent inability to show.
- Following Toby Connor Agriculture Complex Handbook.
- Reading all rules of shows entered by the student as well as Agriculture Science Policy Handbook

PARENT EXPECTATIONS:

- The general supervision of the project on a day to day basis.
- Communication with the AST should a question or problem arise concerning the project or student's performance.
- The transportation of students to the complex for feeding and care of the animal twice daily.
- The transportation, cost of lodging, and accommodations of students at all stock shows.
- Proper removal of any animal that may become deceased during the show season, and costs associated with the removal.
- Making sure all payments are made by the student in a timely manner.
- Being aware of student grades to prevent inability to show.
- Following Toby Connor Agriculture Complex Handbook.
- Reading all rules of shows entered by the student as well as Agriculture Science Policy Handbook

AGRICULTURE SCIENCE TEACHER EXPECTATIONS:

- Provide advice in regards to any problems that may occur with the animal project during normal working hours. Contacting teachers outside of working hours are for emergencies only. The AST will make every effort to assist when needed with those problems.
- The ASTs will visit all projects in accordance with Texas Education Agency guidelines or at feeder request.
- Assist with feeding programs and recommendations.
- Every effort will be made for the teacher to attend all approved shows where 5 or more students are exhibiting one species.
- The AST will assist in giving medications when possible. The teacher will NOT be held liable for injury to livestock while assisting the student with their project. This includes giving medications, castration, dehorning, docking, worming, trimming, transportation or any other activity directly involving the teacher and animals.

Important Dates:

ASTs will send out email reminders and Remind 101 messages about these and future dates.

- **July:** Mandatory Barn Clean Up. 8:00 AM You will receive pen and locker assignments this day. If you are unable to attend, let me know ASAP.
- **July:** Barn open for projects to move in. If you purchase an animal on your own, you can move it in this day or schedule a time at a later date since I have to be at the barn when you move in.
- **July:** All teachers will be gone for State FFA Convention
- **July** - Agriculture Teacher Conference
- **July-August:** Appointments will be made with breeders to go purchase projects for those of you that need help. We will email out when we are going so hopefully groups of us can purchase at the same time.

Instructions for Remind 101

Goats: Text @ccgoat2021 to 81010

Lambs: Text @2020lamb to 81010

Goat/ Lamb Barn Information Sheet

Student Name: _____

Student Phone #: _____

Student Email: _____

Parent/ Guardian Name: _____

Parent/ Guardian Phone #: _____

Parent/ Guardian Email: _____

What Species? Goat Lamb

Would you like the AST to assist in purchasing the animal?

YES

NO

Please fill out **one** of the following options.

- 1. County only animal that you transport to another location following county show (animal lives out life on a friends farm)**

How many? _____ Price Range: _____

- 2. County only animal that you will sell for market or process following county show (Seguin Cattle Co.)**

How many? _____ Price Range: _____

- 3. Animal to take to county and San Antonio Stock Show (terminal show)**

How many? _____ Price Range: _____

Pen # request or pen partner requests: _____

By signing this I agree to follow the guidelines set forth in the Goat/Lamb Handbook.

Student Signature: _____ Date: _____

Parent/ Legal Guardian Signature: _____ Date: _____